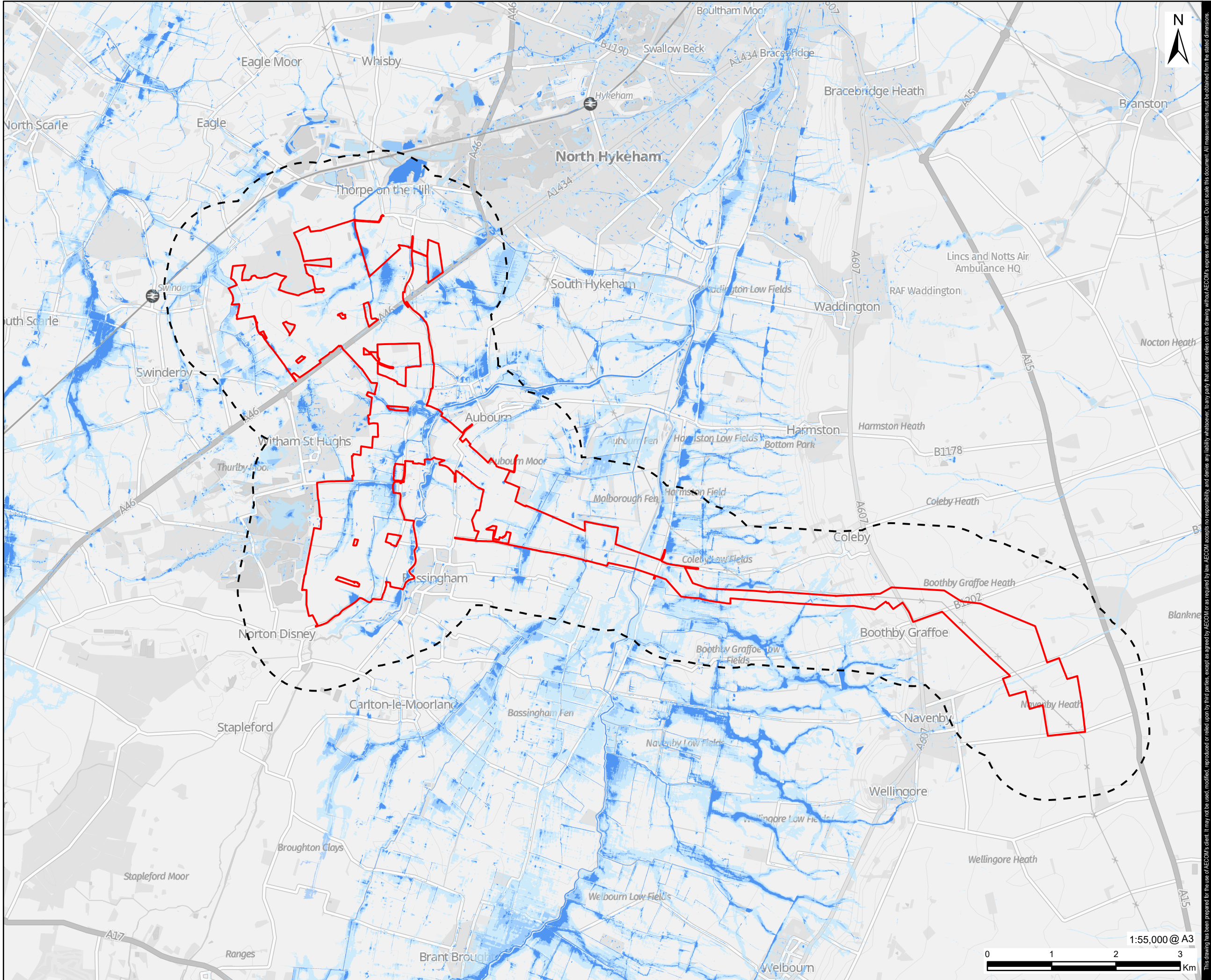


Filename: \\na.aecomnet.com\fs\EMEA\London-UK\ON06\PPFS\W001\UK\ON06\PPFS\W001-V1\DP\Library\GIS_DATA\Projects\Fosse Green Energy\ParAD2_Maps\Environmental Statement\Chapter 09 - Water\ES_Chapter9_Water_Figures.aprx

Project No. : 60700987 Drawn: HW Checked: AM Approved: LB Date: 2025-06-18



PROJECT

Fosse Green Energy

CLIENT

Fosse Green Energy Ltd

CONSULTANT

AECOM Limited
Sunley House
4 Bedford Park
Surrey, CR0 2AP, UK
www.aecom.com

LEGEND

- DCO Site Boundary
- 1km Buffer of the Site Boundary
- 3.33% Annual Exceedance Probability (AEP)
- 1% Annual Exceedance Probability (AEP)
- 0.1% Annual Exceedance Probability (AEP)

NOTES

GB Background: Contains OS data © Crown Copyright and database right 2025
Contains data from OS Zoomstack
Contains Environment Agency data ©. Contains public sector information licensed under the Open Government Licence v3.0.

LEGISLATION

Regulation 5(2)(a) Infrastructure Planning
(Applications: Prescribed Forms and Procedure) Regulations 2009.

ISSUE PURPOSE

DCO Submission

FIGURE TITLE

Surface Water Flood Risk

FIGURE NUMBER

Figure 9-4

REV.

01

DOCUMENT REFERENCE

EN010154/APP/6.2.

This drawing has been prepared for the use of AECOM's client. It may not be used, modified, reproduced or relied upon by third parties, except as agreed by AECOM or as required by law. AECOM accepts no responsibility and denies any liability whatsoever, to any party that uses or relies on this drawing without AECOM's express written consent. Do not scale this document. All measurements must be obtained from the stated dimensions.